

Swivel castor with wheel brake 541 PT 50 PU

Furniture Castors Series 540 PL - Wheel PU

-20 °C - +60 °C

+++
swivels easily

+++
wear resistant

+++
shock proof

+++
floor protective

+++
weather proof

Wheel

coated in polyurethane, 90±3 Shore A

High quality nylon wheel centre, schwarz

Zinc-die-cast housing - chrome plated

Swivel bearing with combined

plain-ball bearing

Wheel brake - glass fibre reinforced

Wheel axle revited

Swivel castor with wheel brake Wheel-Ø A x width B mm: 52x8+8

Load Capacity kg: 40

Load capacity tested according to EN 12530 and EN 12527

Overall height H mm: 63

Dimension of top plate TP 39x39 mm:

Hole spacing HS mm: 30x30/24x24

Hole-Ø HD mm: 5,2

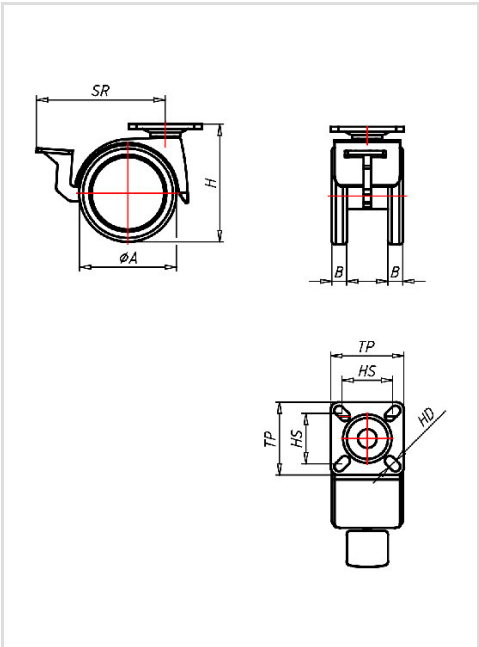
Swivel radius SR mm: 69

Wheel bearing: Nylon plain bearing

Advantages

- ✓ silent in motion
- ✓ low rolling resistance
- ✓ non-marking
- ✓ high resistance to shocks
- ✓ good chemical resistance

©Copyright 2024 Rollenbau GmbH, www.rollenbau.at 20.05.2024



Applications

- Book carts
- Sidetables
- Laboratory equipment
- Instrument stands
- School furniture
- Bedside carts
- Health-Professionals